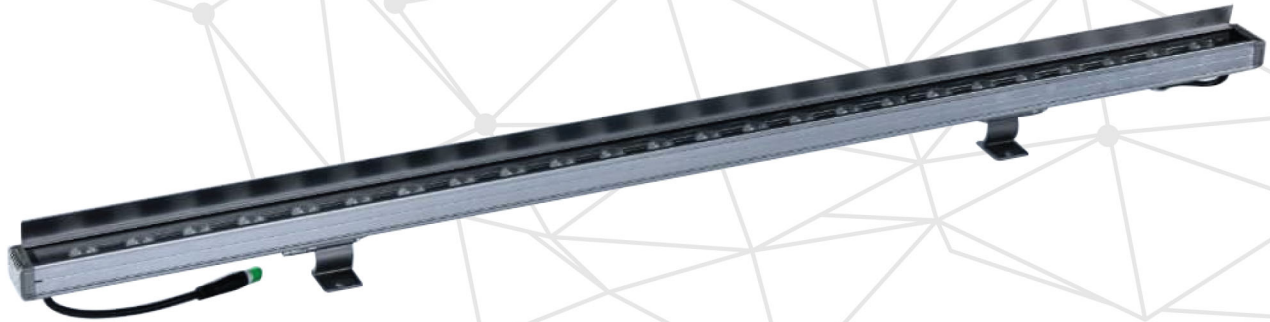




# Architectural Lighting

Wallwasher Series

CE RoHS IP67

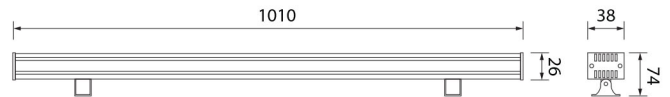


GNS-LN2815

## Product Characters :-

- Body : High quality 6063 aluminum body, with high efficiency, excellent heat dissipation, surface treatment. With mounting bracket.
- Diffuser : Clear tempered glass
- Gasketing : Thermostable silica gel to improve protection class
- Fastener : Stainless steel with high intensity and corrosion protection

## Dimensions (mm) :-



## Applications :-

Facade, villas, parks, garden, squares, bridge etc.

GNS-LN2815

## Specifications :-

Item No.	GNS-LN2815	
Power	18W	
LED Qty	1W*18pcs	
Voltage	DC24V	
Color Rendering (CRI)	80	-
Luminous Flux	110lm/W	-
Color Temperature	3000K	RGB
LED Chip	Bridgelux LED Chip	Epileds LED Chip
IP Rating	IP67	
Beam Angle	5°, 8°, 15°, 25°, 30°, 45°, 60°, 90°, 120°, 10x60°	
LED Lifespan	50,000 hours	
Net Weight	1.05kg	

